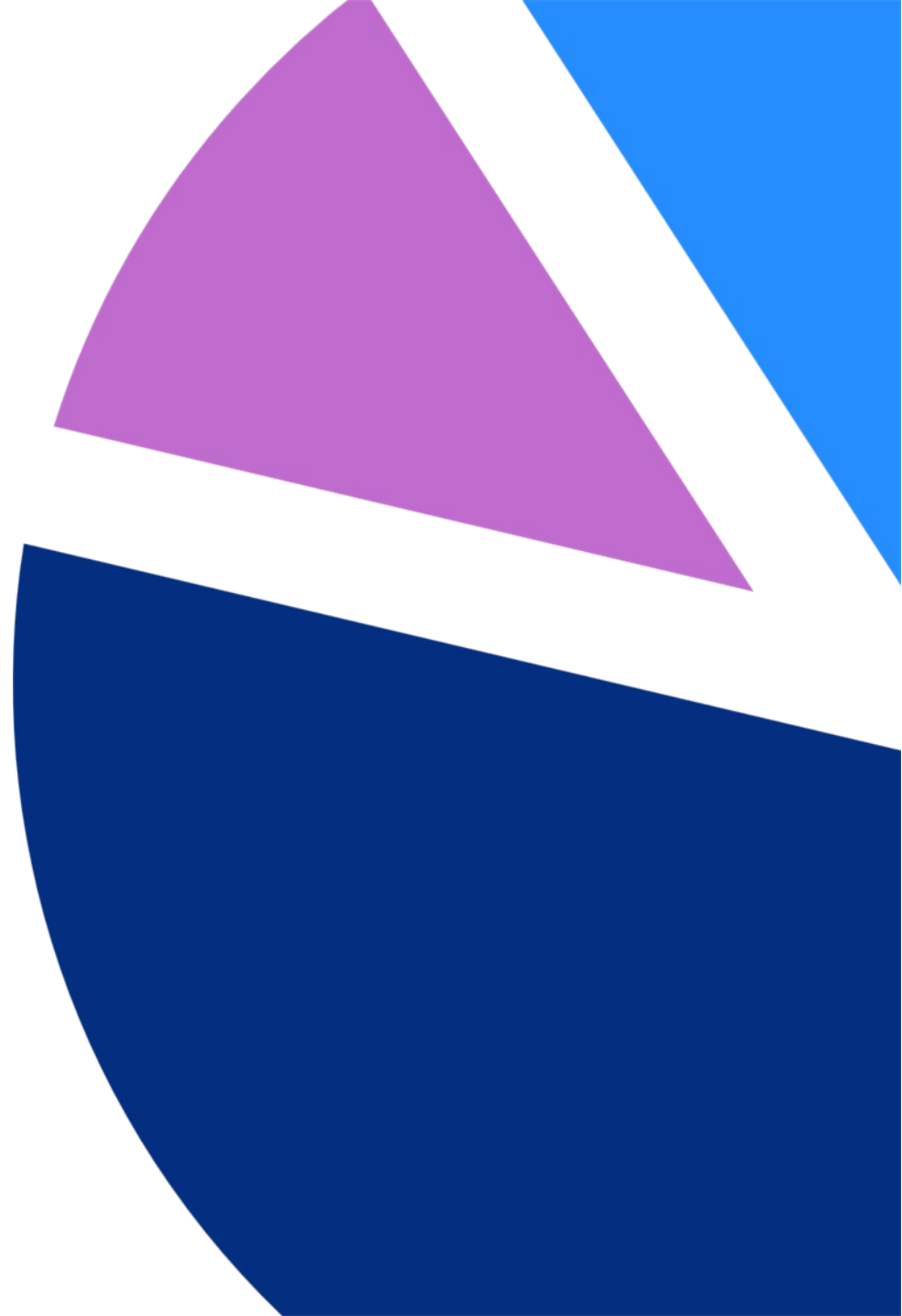


Business Support Service Activities Not Elsewhere Classified (ISIC 82.90)

Mini-presentation for SPPI



Summary



01

Classification



02

Market



03

SPPI measurement



04

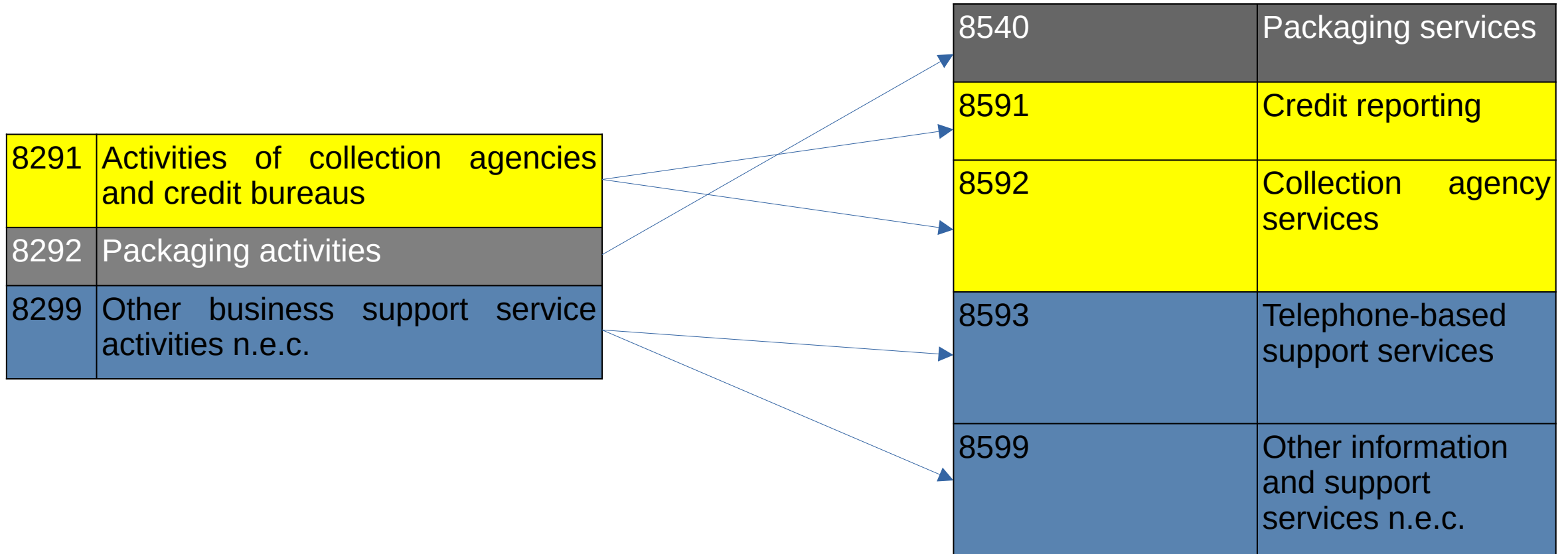
Challenges



01

Classification

Products of the class ISIC 82.90

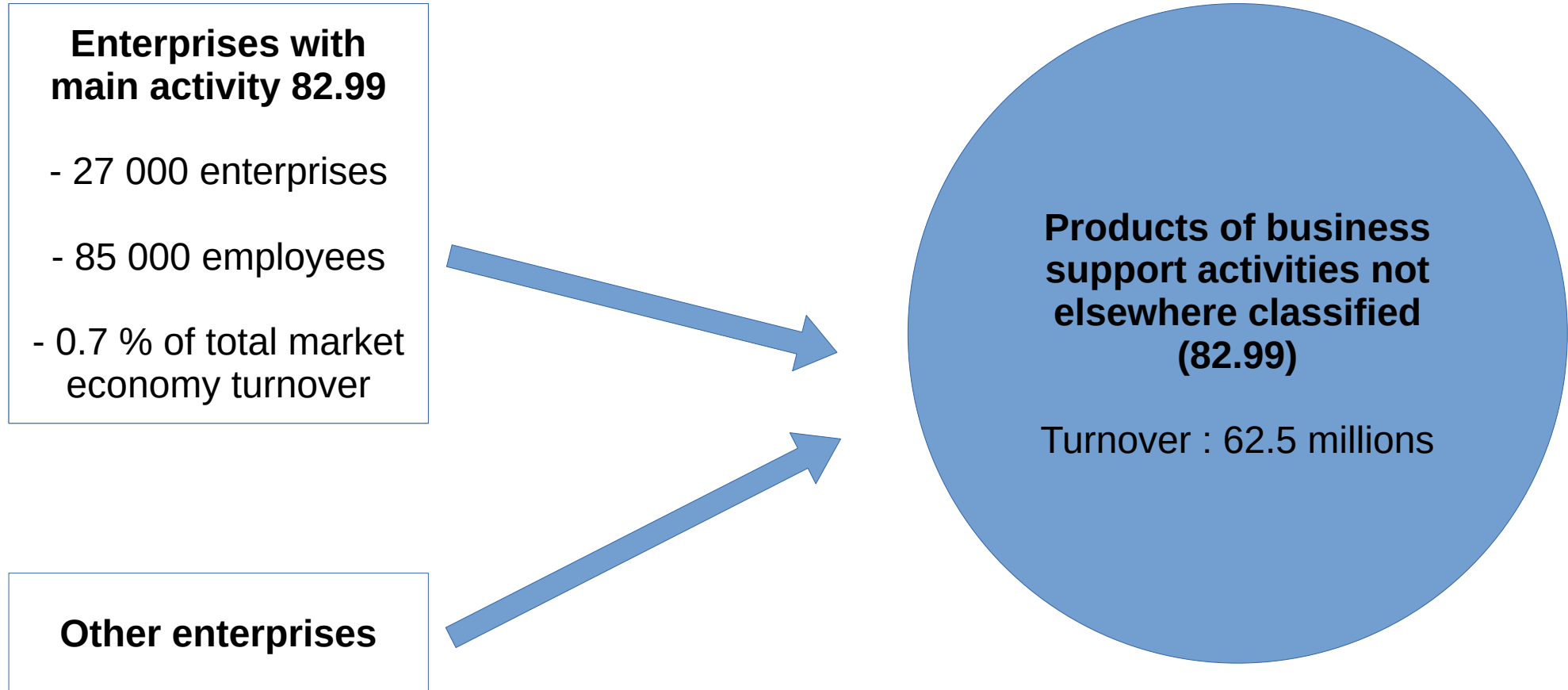


The background features several large, overlapping, curved shapes in various shades of purple and pink, creating a dynamic, abstract pattern.

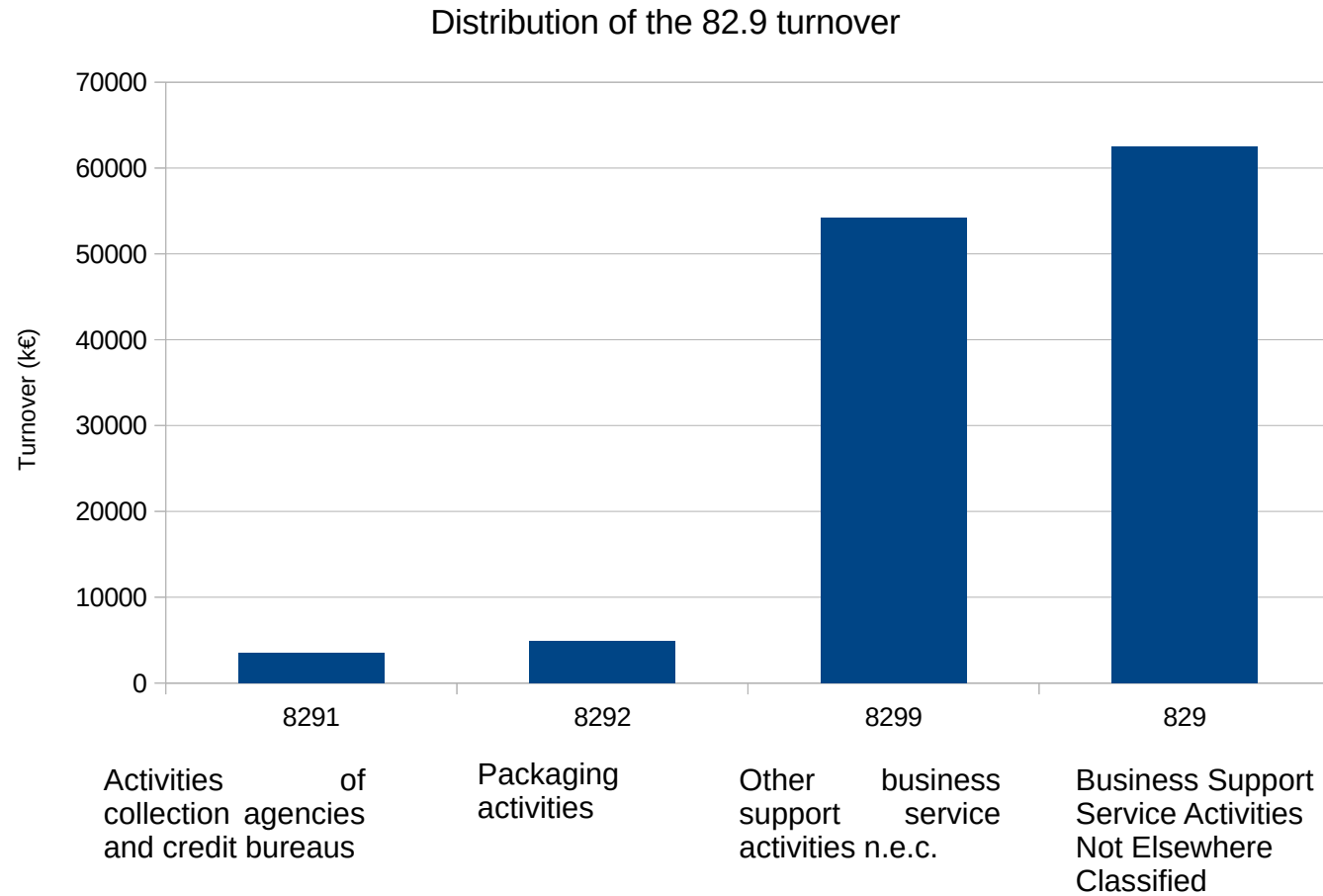
02

Market

The French market



A business dominated by 82.99



Specific characteristics

Key factors in the evolution of business support service activities not elsewhere classified

Activity	Main factors of evolution
Collection agencies and credit bureaus	Highly sensitive to economic conditions Increase of businesses' demand for protection against customer risk
Packaging	Reglementation pressure
Auctions	Digital transition
Tax refund	Linked to the business tourism activity

03

SPPI Measurement

SPPI - Characteristics

- Laspeyres index
- Quaterly published since 2015
- Not publication of the 82.9 directly

Class	BtoB	BtoB – market price	Export	All markets
8291	✓	✓	✗	✓
8292	✗	✗	✗	✗
8299	✓	✓	✓	✓

Used as deflators in the national accounts and as economic indicators

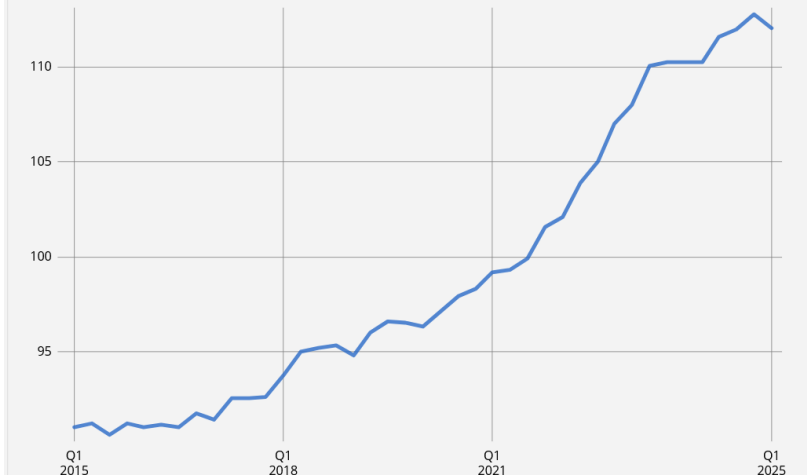
French services producer price index for all markets (BtoAll) – CPA 82.91 – Activities of collection agencies and credit bureaus

1st quart. 2025 : 116.0



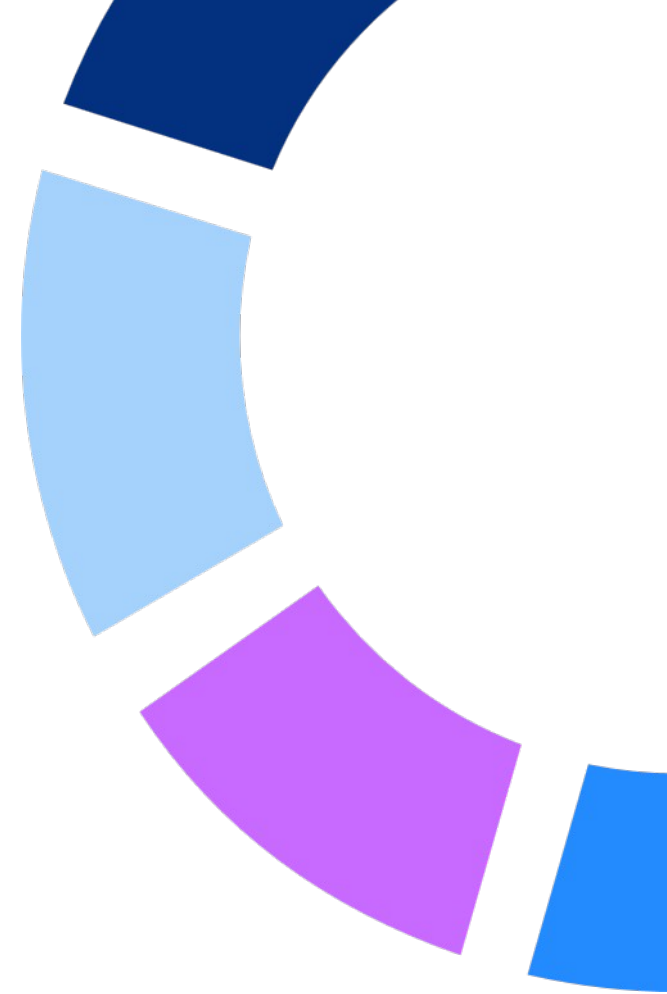
French services producer price index for all markets (BtoAll) – CPA 82.99 – Other business support services n.e.c.

1st quart. 2025 : 112.1



Method

- Turnover of cpf4 levels coming from the structural business statistics
- Products details are defined by a renewal operation (every 5 years)
 - Sample of firms by cut-off
 - Products (and their weights) provided by INSEE surveyors during a visit to the company, in order to define representative and easy to follow products
- The price are collected quarterly
 - 99 companies
 - 254 products



SPPI pricing method

| Class 82.91- Activities of collection agencies and credit bureaus

Debt collection

Commission rate and/or file fees

Financial informations

- Price for a type of subscription
- Price per search
- Price per act (document consulted)
- Percentage on the value

Purchase of debts and claims

- Commission rate
- Fees multiplied by a financial PCI

SPPI pricing method

| Class 82.92- Packaging activities

Mainly tracked

- Average unit price
- Margin

Necessary details

- Type of product packaged (cosmetics, pharmaceuticals, food, etc.)
- Type of packaging (bagging, blister packing, etc.)
- Client

SPPI pricing method

| Class 82.99 - Other business support service activities
n.e.c.

Auctions sales

- Average commission for a set of similar lots
- Commission rate indexed on a base, such as:
 - Average price per lot (e.g. hammer price / number of lots)
 - Average annual sale price by horse type
 - Consumer Price index
- Registration fees

Tax Refund Services

- Average fees
- Commission :
 - Gross refund to buyer
 - Comission earned

04

Challenges

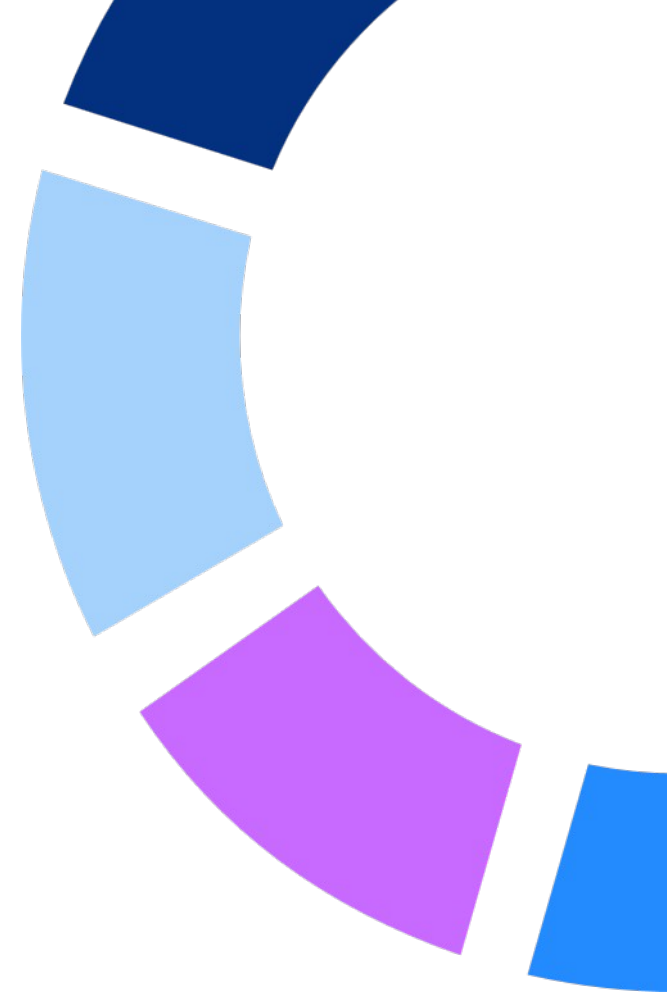
Challenges



Build a representative sample for the 82.99 class



The diversity of the 82.99 class



Thank you

Théophile Desolle
Methodologist
Business statistics
+33187696112
theophile.desolle@insee

insee.fr      [blog](#)

Insee 
Measuring, understanding